



**ImageTrend Elite Clinical Release Notes**

*4 September 19*

*(Illinois Only)*

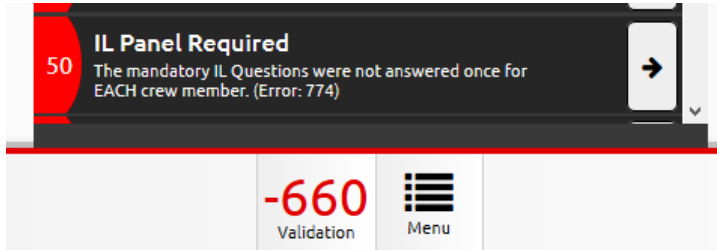
The AMGH ImageTrend Support Team has released an update to the Elite System.

All iPads will need be connected to the internet and a Sync of All Resources (Settings/Sync All Resources) will have to be completed to receive the update.

For support please utilize the AMGH ImageTrend Support Site.

<https://amgh.kayako.com>

The Illinois Department of Public Health, Division of Emergency Medical Systems, requires PPE and Exposure questions for each crewmember to be documented on every incident. This is in addition to the PPE question already in the template.



This new requirement is located in the Illinois specific State panel at the bottom of the left side of the incident:



***Note: Eventhough the EMS System Number is greyed out the data is sent automatically through internal programming based on the agency selected.***

**Required Fields:**

Crew Member ID

Personal Protective Equipment Used

Suspected EMS Work Related Exposure, Injury or Death

Type of Work-Related Injury, Death, or Suspected Exposure

The screenshot shows a software window titled "Exposures" with a red header bar. Below the title is a "+ Add" button. The main content area contains several sections:

- EMS Professional (Crew Member) ID:** A group of four buttons: "Medic, DEMO", "Other, Healthcare Provider", "Other, Pre-Hospital Personnel", and "Partner, James".
- Personal Protective Equipment Used:** A search input field with the placeholder text "Find a Value...", a list icon (three horizontal lines), and a filter icon (three horizontal lines with a square).
- Suspected EMS Work Related Exposure, Injury, or Death:** Two buttons labeled "No" and "Yes", and a radio button icon.
- The Type of Work-Related Injury, Death or Suspected Exposure:** A search input field with the placeholder text "Find a Value...", a list icon, a filter icon, and a radio button icon.

At the bottom center of the form is a large "OK" button with a checkmark icon.

When both crewmember requirements are documented the validation rule will be satisfied:

### Exposures

**+ Add**

Exposure			X
<b>EMS Professional (Crew Member) ID:</b> Partner, James	<b>Personal Protective Equipment Used:</b> Gloves	<b>Suspected EMS Work Related Exposure, Injury, or Death:</b> No	
Exposure			X
<b>EMS Professional (Crew Member) ID:</b> Medic, DEMO	<b>Personal Protective Equipment Used:</b> Gloves	<b>Suspected EMS Work Related Exposure, Injury, or Death:</b> No	